



YOU MUST FOLLOW THESE INSTRUCTIONS

HOW DO YOU PREPARE?

When contrast will be administered during your CT scan, a blood test will be required within 30 days prior to check kidney function.

If you are allergic to dye, you will need to take medication before the scan and you will need a driver to and from your appointment.

CTA CORONARY

Food & Drink

Nothing to eat or drink 4 hours prior to scan, other than water.
NO caffeine, alcohol, nicotine day of scan

Medications

DO NOT TAKE DAY OF SCAN

Diuretic: _____

Ace Inhibitor: _____

Angiotension Receptor Blocker: _____

DO NOT TAKE DAY OF SCAN OR 2 DAYS AFTER

Metformin: _____

BETA BLOCKER

You will most likely be given medication to lower your heart rate, or will be asked to increase what you currently take.

DO NOT TAKE 2 DAYS BEFORE OR 2 DAYS AFTER

Erectile Dysfunction medication: _____

CT SCAN WITH CONTRAST

Food & Drink

Nothing to eat or drink 4 hours prior to scan, other than water.

Medications

DO NOT TAKE DAY OF SCAN

Diuretic: _____

Ace Inhibitor: _____

Angiotension Receptor Blocker: _____

DO NOT TAKE DAY OF SCAN OR 2 DAYS AFTER

Metformin: _____

CT SCAN WITHOUT CONTRAST

No preparation needed

IOWA HEART CENTER CT TESTING

WEST DES MOINES
5880 University Avenue
(515) 633-3600
(877) 914-3600



IOWAHEARTCENTER



IOWA HEART — THE BEST FOR CARDIOVASCULAR CARE.

CT Scan

APPOINTMENT DATE: _____

APPOINTMENT TIME: _____

If you are unable to make your appointment, you must call 24 hours in advance or you may be charged for the doses already ordered for you.

Radiation exposures from diagnostic medical examinations are generally low and are almost always justified by the benefits of accurate diagnosis of possible disease conditions. Please ask us if you have any concerns regarding the radiation exposure associated with CT scanning.

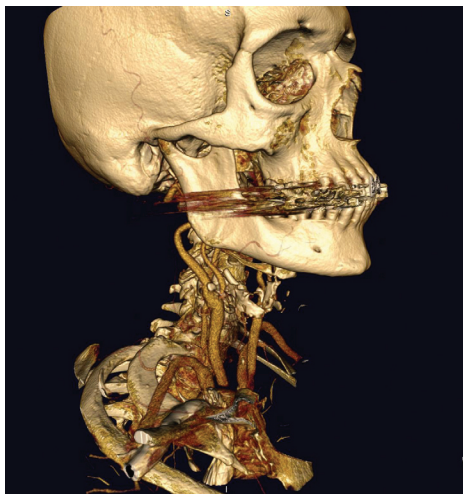
IOWAHEART.COM



IOWAHEARTCENTER

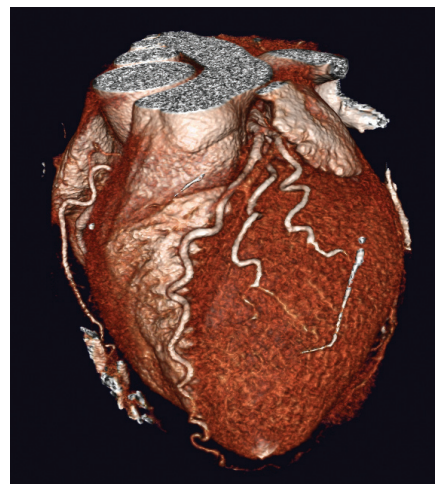
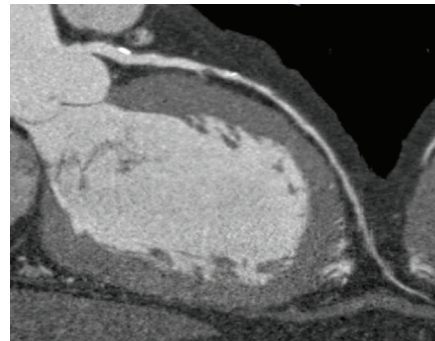
PERIPHERAL CT ANGIOGRAPHY (CTA)

Peripheral Angiography is a non-invasive test used to visualize main vessels and arteries. Images can be obtained on almost any part of the body. This is helpful in diagnosing aneurysms, blockages or narrowing of blood vessels.



CORONARY CT ANGIOGRAPHY (CTA)

Coronary CTA is a non-invasive heart-imaging test where high-resolution, 3-dimensional pictures of the heart and vessels are produced to determine if either fatty or calcium deposits have built up in the coronary arteries restricting blood flow. Coronary CTA is most useful to determine whether symptoms of chest pain may be caused by a coronary blockage. Also patients with diabetes, high blood pressure, elevated cholesterol, smokers and those who have a family history of cardiac events may be good candidates for this scan.



WHAT HAPPENS DURING YOUR SCAN?

You may be asked to undress and wear a paper gown. You will lie on your back on the scanner table with your arms above your head, 3 electrodes may be placed on your chest to monitor your heart rate and rhythm. While images are being obtained you will be asked to hold your breath, remain still and the table will move you through the scanner.

CTA CORONARY

A calcium score will be completed initially. If the calcium score is too high the CTA Coronary will not be completed. You will be given a spray of Nitroglycerin, contrast dye will be injected and images will be obtained.

You may feel warm and flushed for a few minutes, which is normal. However, if you should feel itchy, short of breath or uncomfortable, please let your technologist know.

Your I.V. will be removed 10-15 minutes after scan.

CT SCAN WITH CONTRAST

Dye will be injected and your images will be obtained. You may feel warm and flushed for a few minutes, which is normal. However, if you should feel itchy, short of breath or uncomfortable, please let your technologist know.

Your I.V. will be removed 10-15 minutes after scan.